

**DMRT2 Antibody (N-Term)**  
**Purified Rabbit Polyclonal Antibody (Pab)**  
**Catalog # AP21761a**

**Specification**

---

**DMRT2 Antibody (N-Term) - Product Information**

|                   |                        |
|-------------------|------------------------|
| Application       | WB,E                   |
| Primary Accession | <a href="#">Q9Y5R5</a> |
| Reactivity        | Human                  |
| Host              | Rabbit                 |
| Clonality         | polyclonal             |
| Isotype           | Rabbit IgG             |
| Calculated MW     | 61814                  |

**DMRT2 Antibody (N-Term) - Additional Information**

**Gene ID** 10655

**Other Names**

Doublesex- and mab-3-related transcription factor 2, Doublesex-like 2 protein, DSXL-2, DMRT2, DSXL2

**Target/Specificity**

This DMRT2 antibody is generated from a rabbit immunized with a KLH conjugated synthetic peptide between 222-256 amino acids from human DMRT2.

**Dilution**

WB~~1:2000

E~~Use at an assay dependent concentration.

**Format**

Purified polyclonal antibody supplied in PBS with 0.09% (W/V) sodium azide. This antibody is purified through a protein A column, followed by peptide affinity purification.

**Storage**

Maintain refrigerated at 2-8°C for up to 2 weeks. For long term storage store at -20°C in small aliquots to prevent freeze-thaw cycles.

**Precautions**

DMRT2 Antibody (N-Term) is for research use only and not for use in diagnostic or therapeutic procedures.

**DMRT2 Antibody (N-Term) - Protein Information**

**Name** DMRT2

**Synonyms** DSXL2

**Function** Transcriptional activator that directly regulates early activation of the myogenic determination gene MYF5 by binding in a sequence-specific manner to the early epaxial enhancer element of it. Involved in somitogenesis during embryogenesis and somite development and differentiation into sclerotome and dermomyotome. Required for the initiation and/or maintenance of proper organization of the sclerotome, dermomyotome and myotome (By similarity).

**Cellular Location**

Nucleus {ECO:0000255|PROSITE-ProRule:PRU00070}.

**Tissue Location**

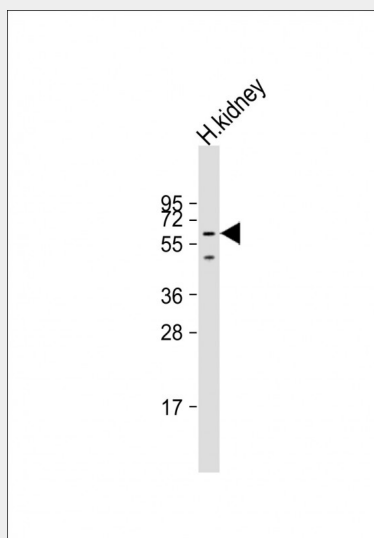
Expressed in testis, kidney and skeletal muscle.

**DMRT2 Antibody (N-Term) - Protocols**

Provided below are standard protocols that you may find useful for product applications.

- [Western Blot](#)
- [Blocking Peptides](#)
- [Dot Blot](#)
- [Immunohistochemistry](#)
- [Immunofluorescence](#)
- [Immunoprecipitation](#)
- [Flow Cytometry](#)
- [Cell Culture](#)

**DMRT2 Antibody (N-Term) - Images**



Anti-DMRT2 Antibody (N-Term) at 1:2000 dilution + human kidney lysate Lysates/proteins at 20 µg per lane. Secondary Goat Anti-Rabbit IgG, (H+L), Peroxidase conjugated at 1/10000 dilution. Predicted band size : 62 kDa Blocking/Dilution buffer: 5% NFDm/TBST.

**DMRT2 Antibody (N-Term) - Background**

Transcriptional activator that directly regulates early activation of the myogenic determination gene MYF5 by binding in a sequence-specific manner to the early epaxial enhancer element of it. Involved in somitogenesis during embryogenesis and somite development and differentiation into sclerotome and dermomyotome. Required for the initiation and/or maintenance of proper

organization of the sclerotome, dermomyotome and myotome (By similarity).

#### **DMRT2 Antibody (N-Term) - References**

Raymond C.S.,et al.Hum. Mol. Genet. 8:989-996(1999).

Ottolenghi C.,et al.Genomics 64:179-186(2000).

Calvari V.,et al.Genomics 65:203-212(2000).

Humphray S.J.,et al.Nature 429:369-374(2004).

Mural R.J.,et al.Submitted (SEP-2005) to the EMBL/GenBank/DDBJ databases.